

JISAN HEAVY INDUSTRY LTD.  
Professional Excavator Attachment Manufacturer

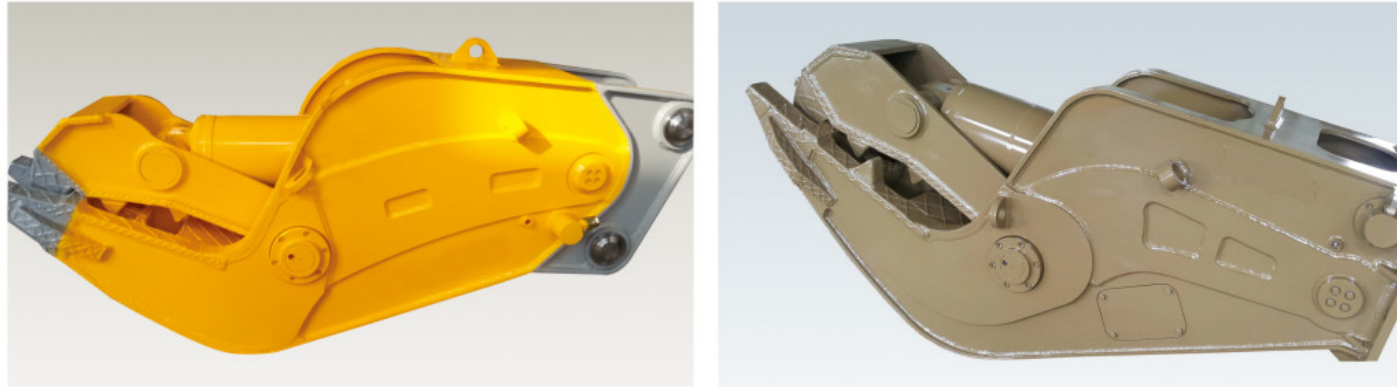


Address: NO 41, Jinfeng Road, Fushan District, Yantai, China. 265500  
Tel: +86 18615951533 Fax: +86-5353468305  
E-mail: [scottning@jisanbr.com](mailto:scottning@jisanbr.com) Website: [www.jisanbr.net](http://www.jisanbr.net)  
Facebook: [www.facebook.com/jisanheavyindustry](http://www.facebook.com/jisanheavyindustry)





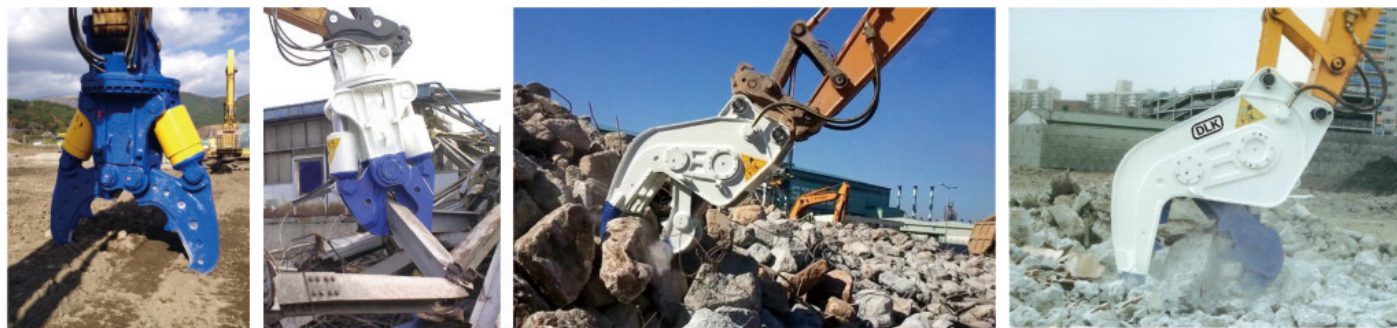
## HYDRAULIC PULVERIZER



Engineered for exceptional fragmentation, the DLK series is the perfect tool for secondary demolition and recycling of concrete. High grade steel with special seal keeps dust and other debris from pins, ensuring long life and low maintenance. A high performance cylinder reduces the time needed to open and close jaws, increasing productivity while two replaceable steel bar cutters provide maximum efficiency in cutting rebar.

### ADVANTAGES AND STRUCTURES

- ◆ The wide opening width as compared with other companies' equipment, not only outstanding performance in handing the iron bar but also maximize the operation efficiency with light weight.
- ◆ Cylinder, which is made of special designed sealing structure, demonstrate the strong power and has excellent durability. So it can reduce the maintenance costs(cylinder protection system is applied)
- ◆ JAW and TOOTH which is made of strong quality of the material and heat treatment is light and has excellent abrasion-resistant. So it can sue more a longer.
- ◆ Grease is injected with a special structure for each part is sealing process. It can make the grease injection well, while the abrasion of pin and bushing is reduced as much as possible.



Item	Model	Unit	DLKV15	DLKV20	DLKV25	DLKV30	DLKV50
Weight		kg	890	1500	1750	2350	4200
Opening with jaw		mm	0-800	0-870	0-980	0-1120	0-1280
Operating pressure		kg/ cm <sup>2</sup>	260	280	300	300	300
Suitable excavator		mm	13-18	20-22	22-25	28-37	42-47

## TILT BUCKET



## EXCAVATOR RAKE



## FORK LIFT



## HYDRAULIC POWER THUMB

